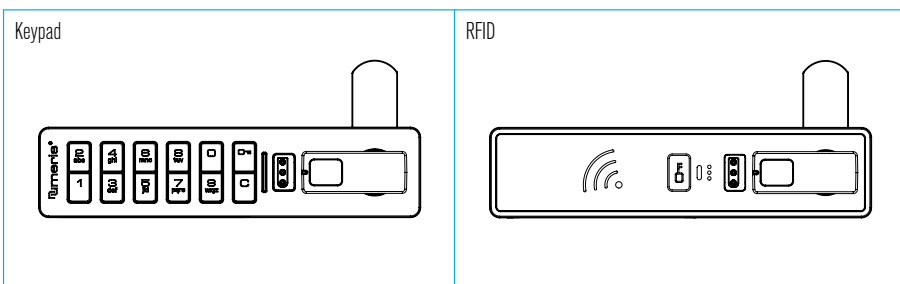
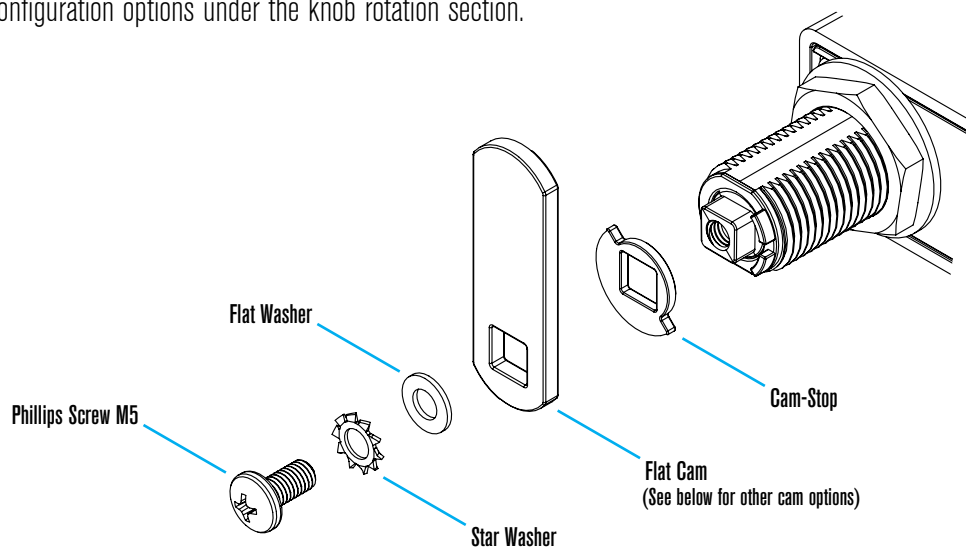


# Cam Guide

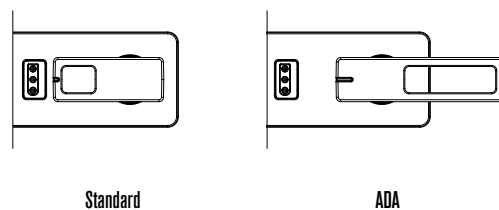
## Horizontal - Knob on the Right

Example shows Configuration 2a. See other configuration options under the knob rotation section.

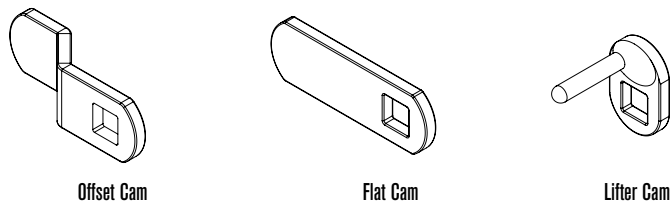


Shown in the locked position.

## Knob Options



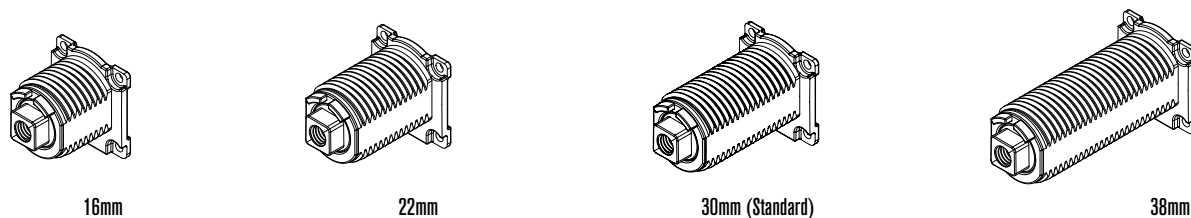
## Cam Options



## Cam-Stop Options

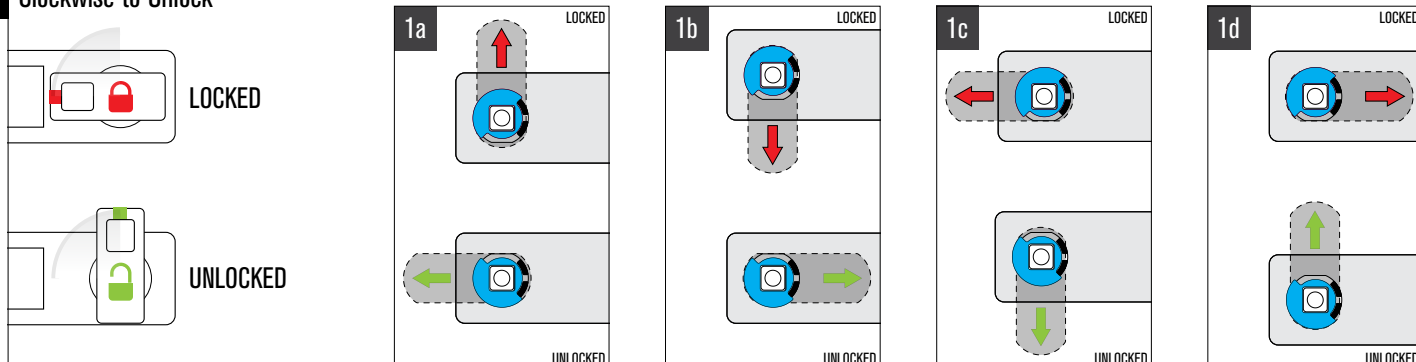


## Cylinder Length Options

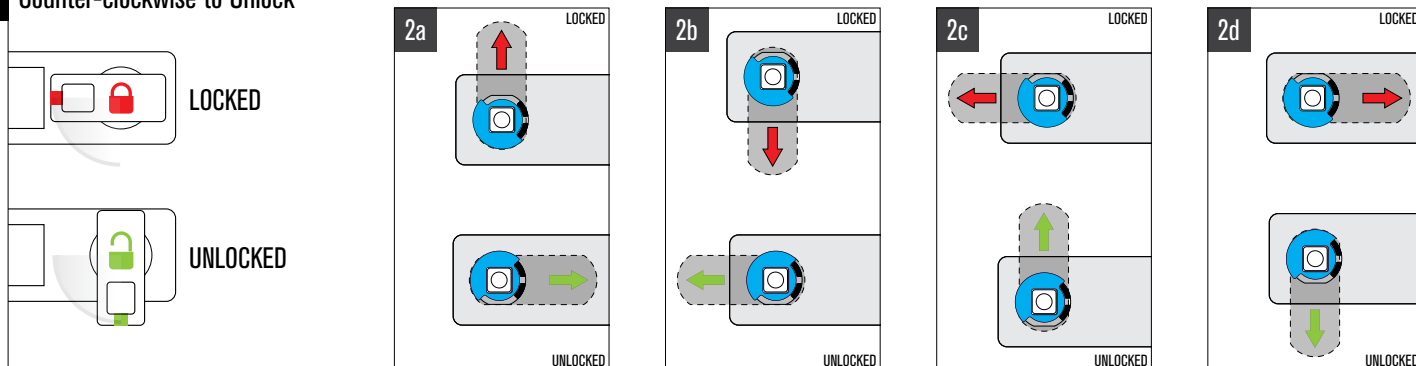


## 90° Knob Rotation

### 1 Clockwise to Unlock

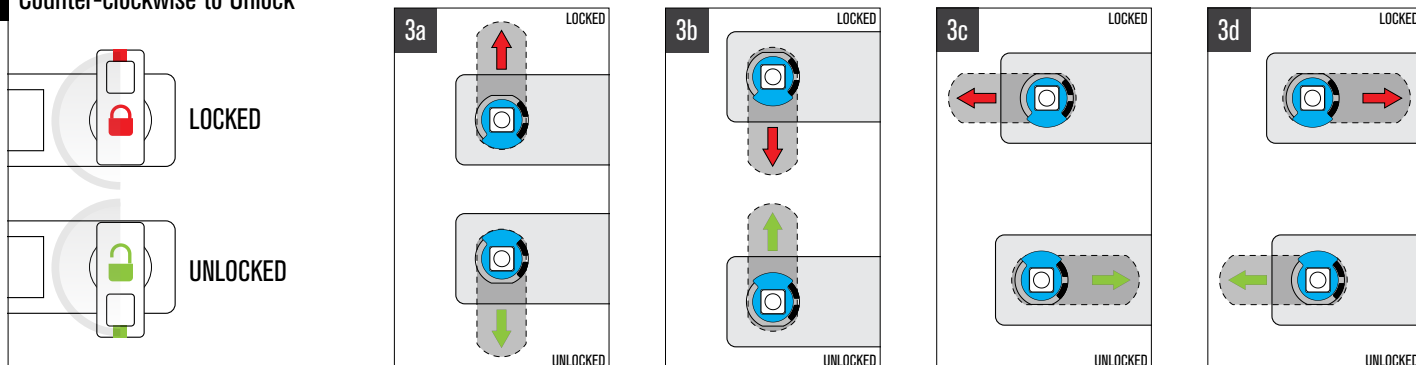


### 2 Counter-clockwise to Unlock

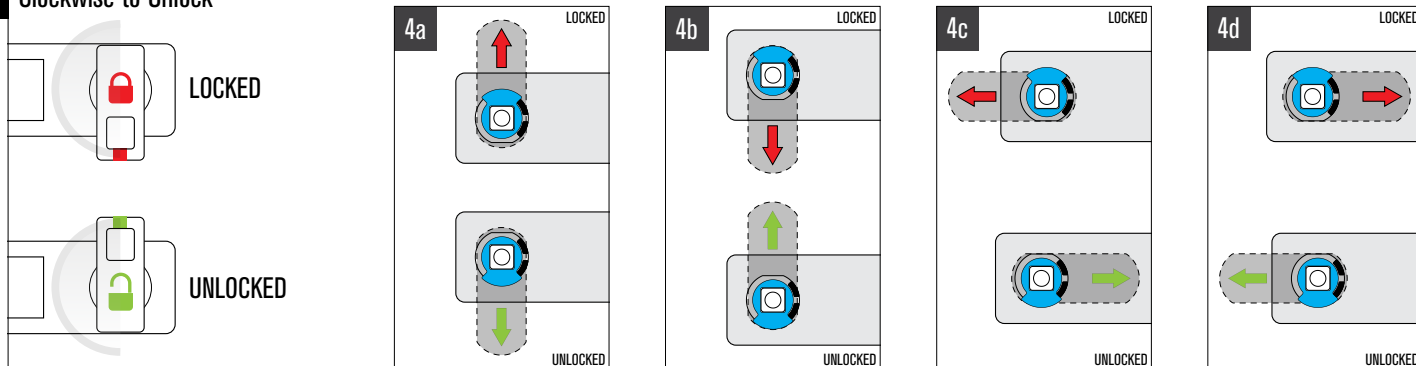


## 180° Knob Rotation

### 3 Counter-clockwise to Unlock

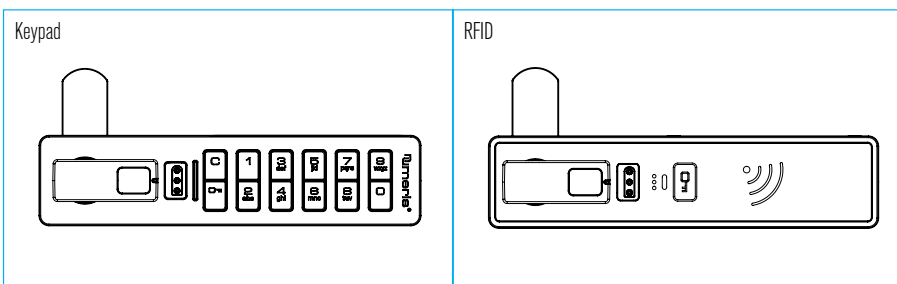
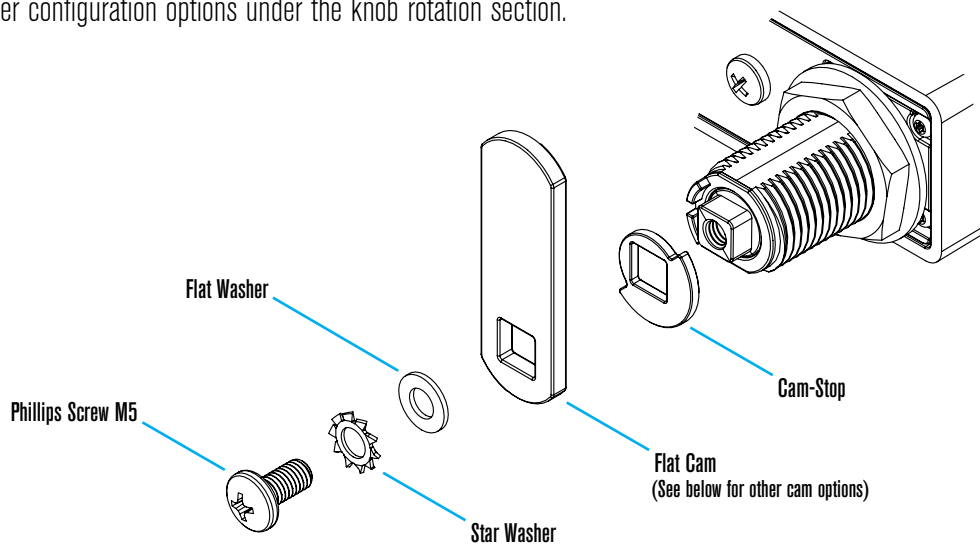


### 4 Clockwise to Unlock



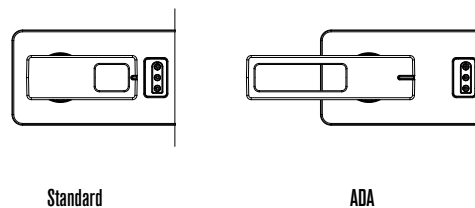
## Horizontal - Knob on the Left

Example shows Configuration 1b. See other configuration options under the knob rotation section.

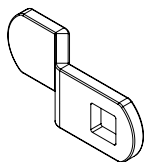


Shown in the locked position.

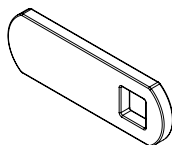
## Knob Options



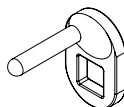
## Cam Options



Offset Cam



Flat Cam



Lifter Cam

## Cam-Stop Options

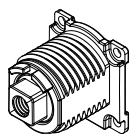


90° Cam-Stop

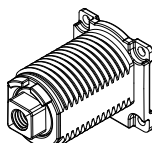


180° Cam-Stop

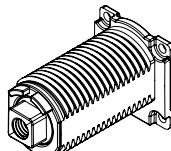
## Cylinder Length Options



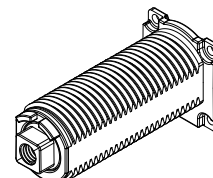
16mm



22mm



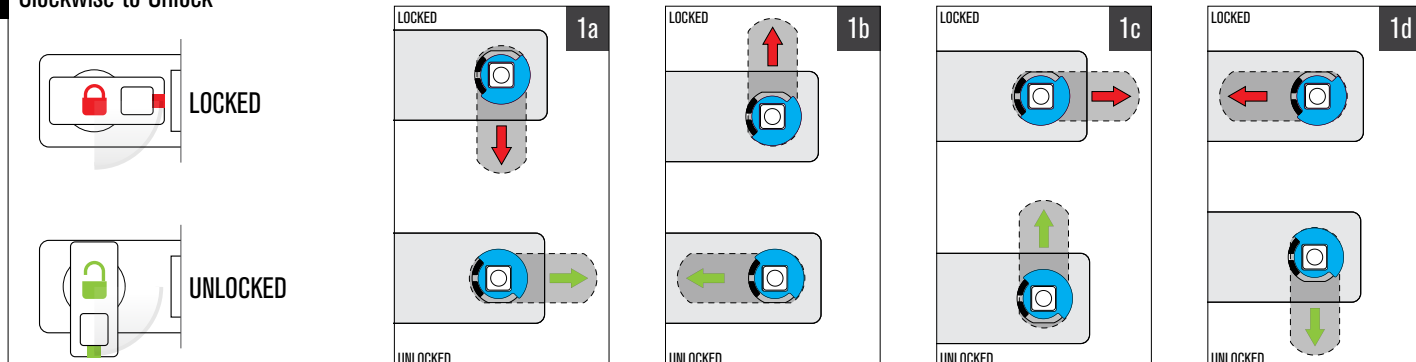
30mm (Standard)



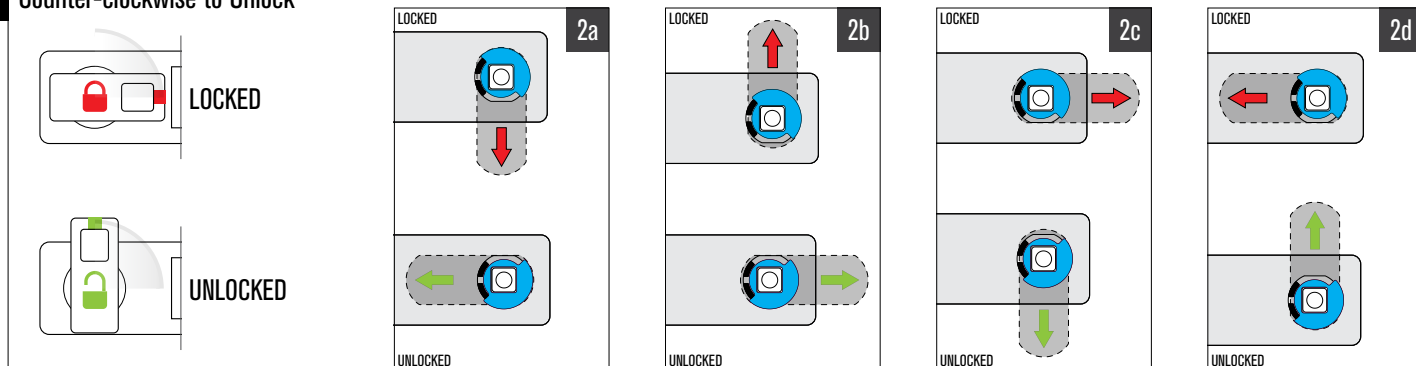
38mm

## 90° Knob Rotation

### 1 Clockwise to Unlock

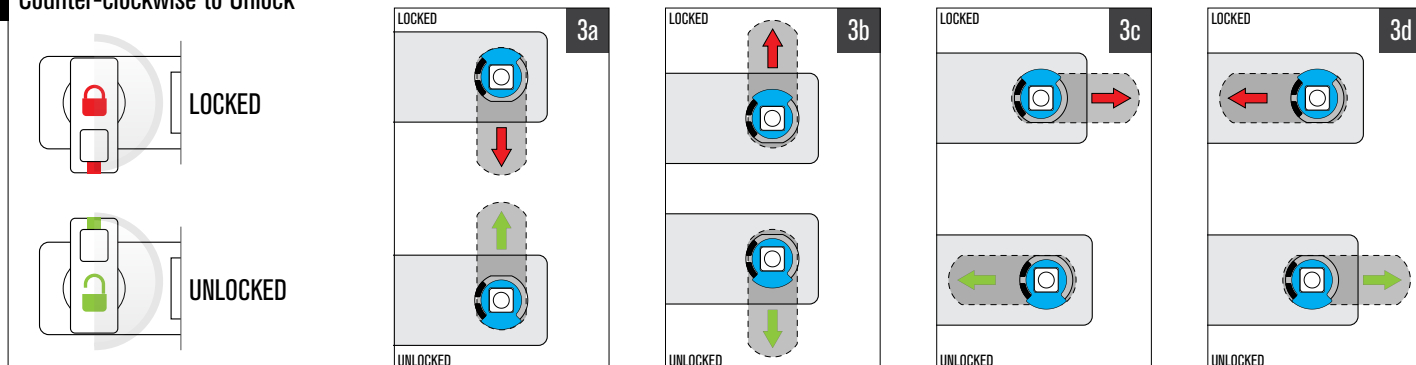


### 2 Counter-clockwise to Unlock

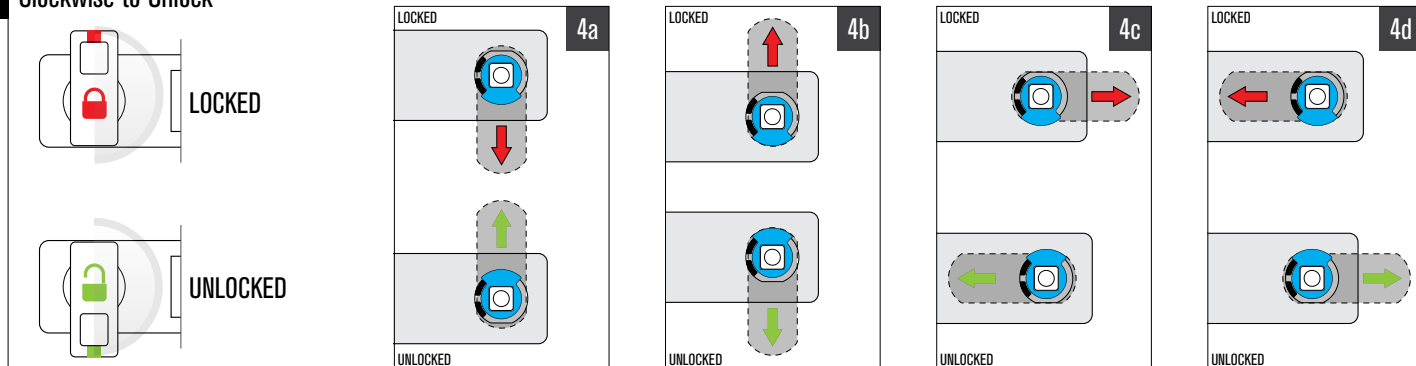


## 180° Knob Rotation

### 3 Counter-clockwise to Unlock

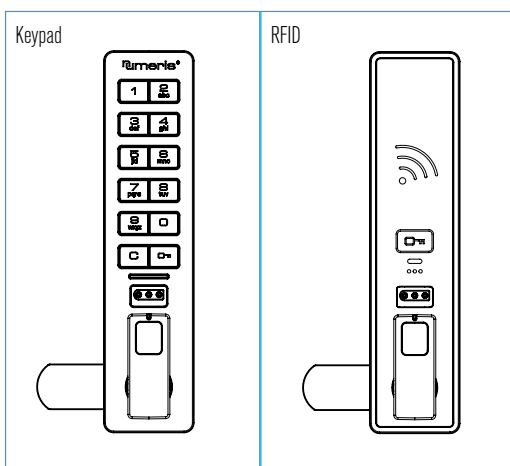
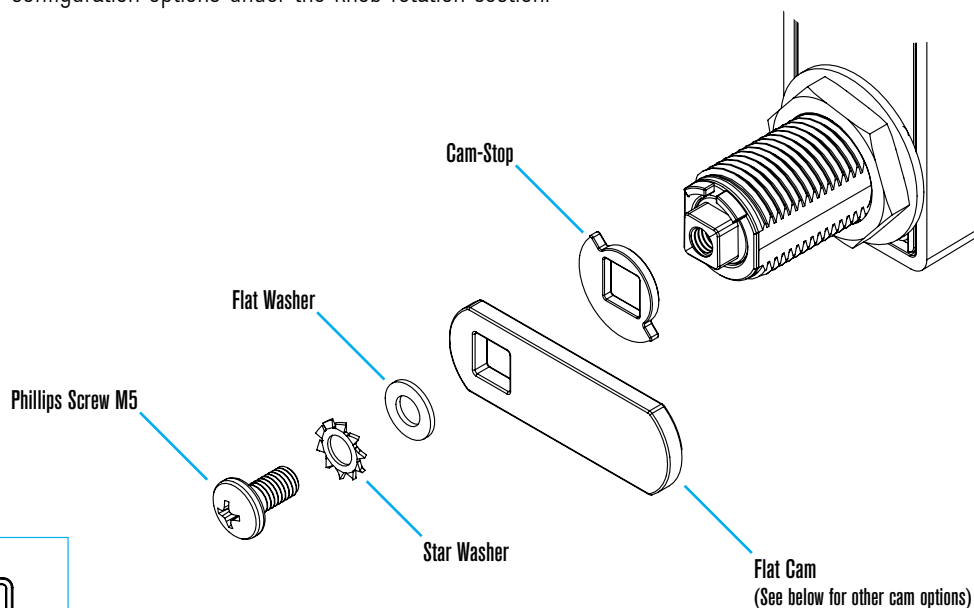


### 4 Clockwise to Unlock



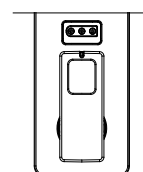
## Vertical - Knob on the Bottom

Example shows Configuration 1a. See other configuration options under the knob rotation section.

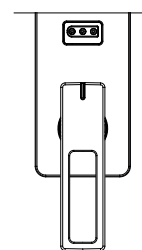


Shown in the locked position.

## Knob Options

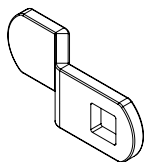


Standard

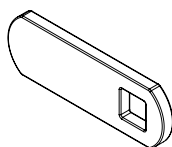


ADA

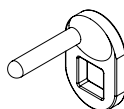
## Cam Options



Offset Cam



Flat Cam



Lifter Cam

## Cam-Stop Options

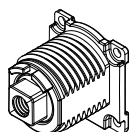


90° Cam-Stop

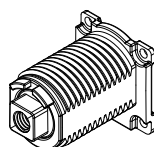


180° Cam-Stop

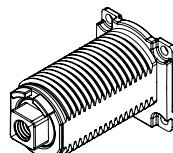
## Cylinder Length Options



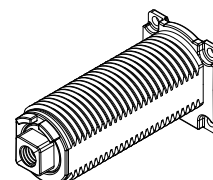
16mm



22mm



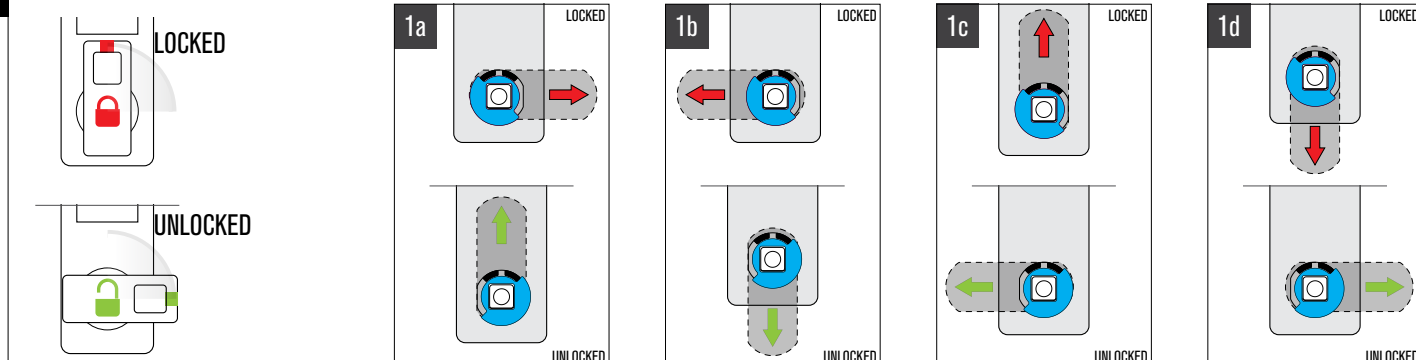
30mm (Standard)



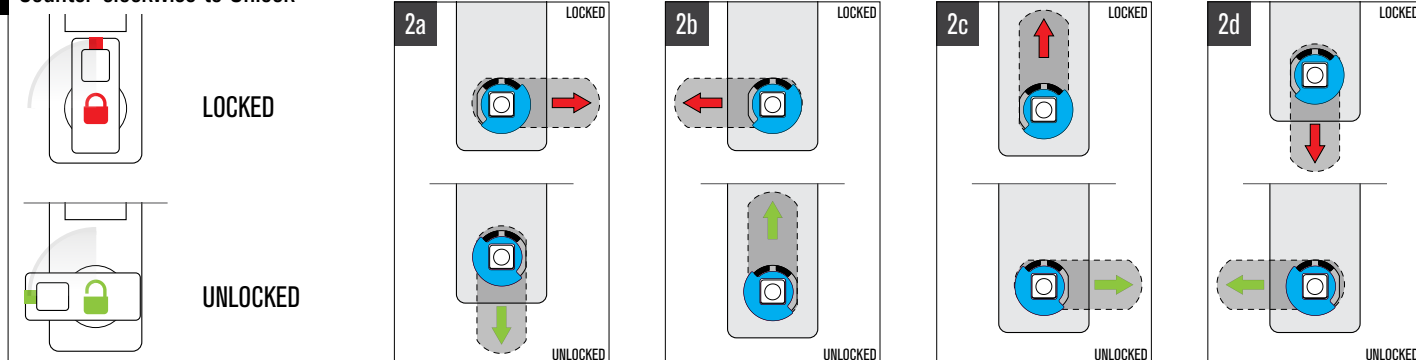
38mm

## 90° Knob Rotation

### 1 Clockwise to Unlock

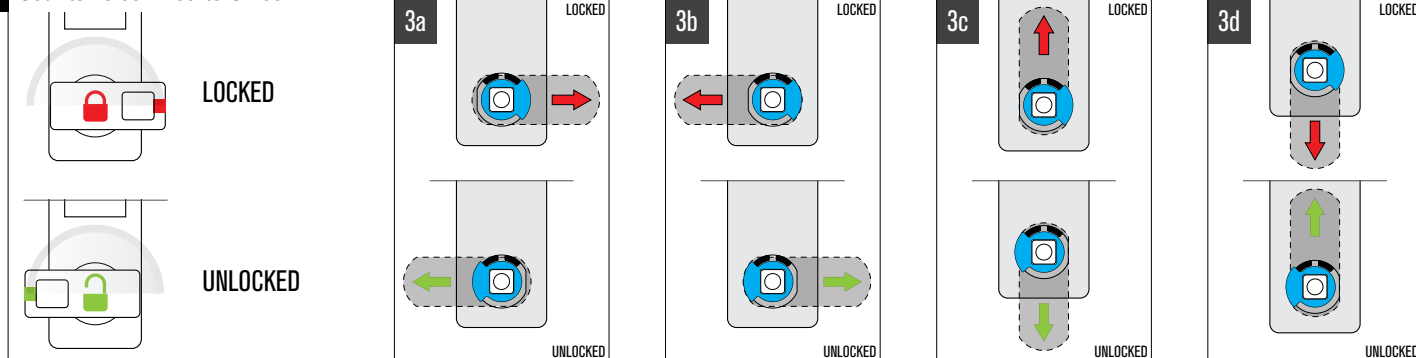


### 2 Counter-clockwise to Unlock

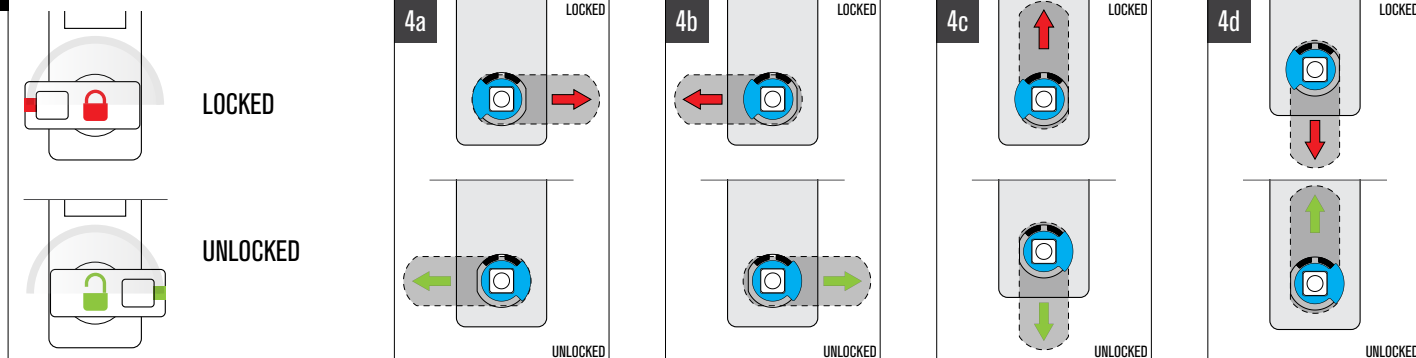


## 180° Knob Rotation

### 3 Counter-clockwise to Unlock

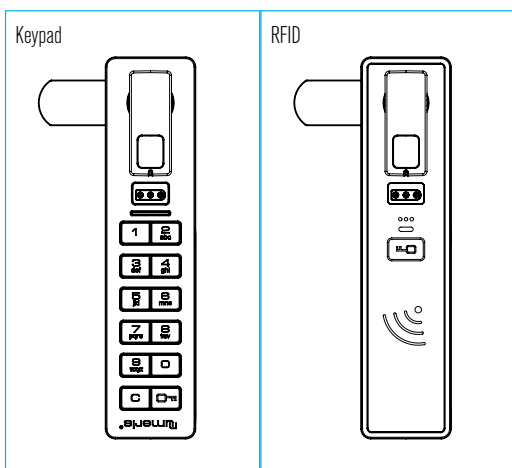
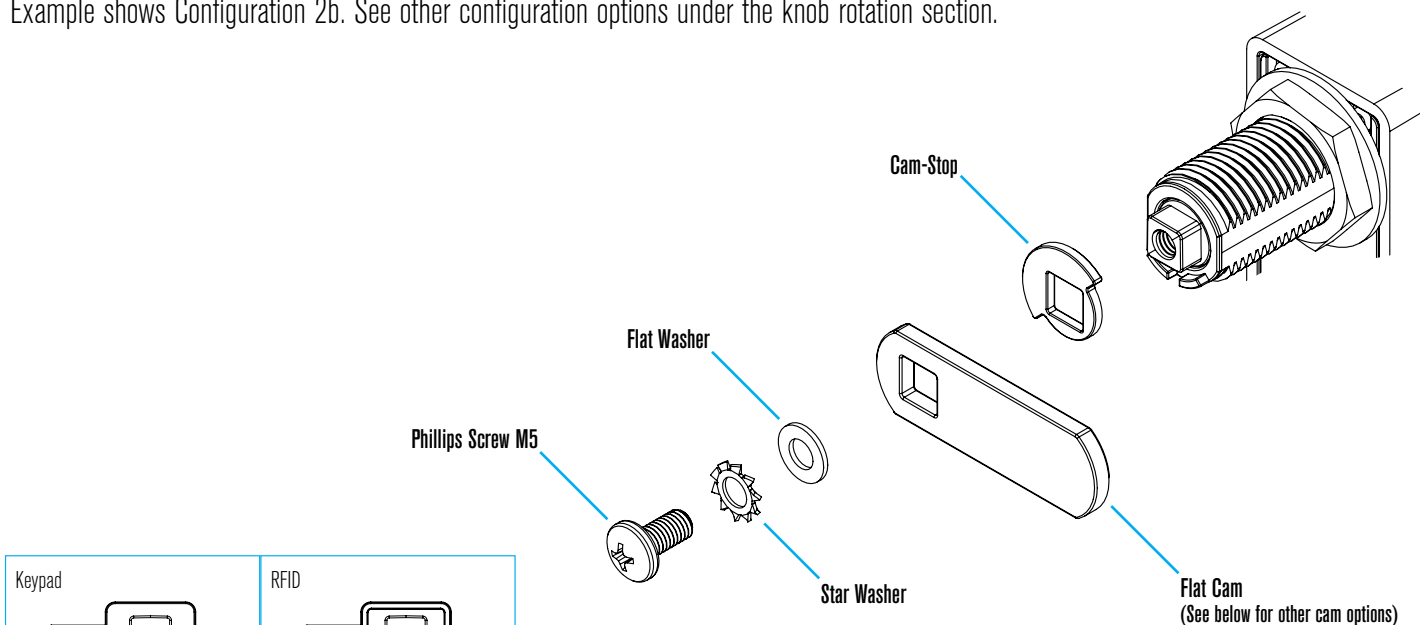


### 4 Clockwise to Unlock



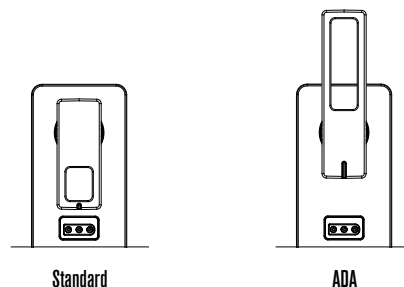
## Vertical - Knob on Top

Example shows Configuration 2b. See other configuration options under the knob rotation section.

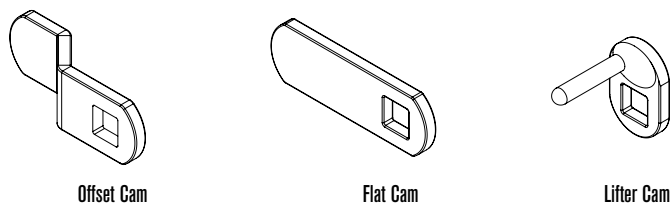


Shown in the locked position.

## Knob Options



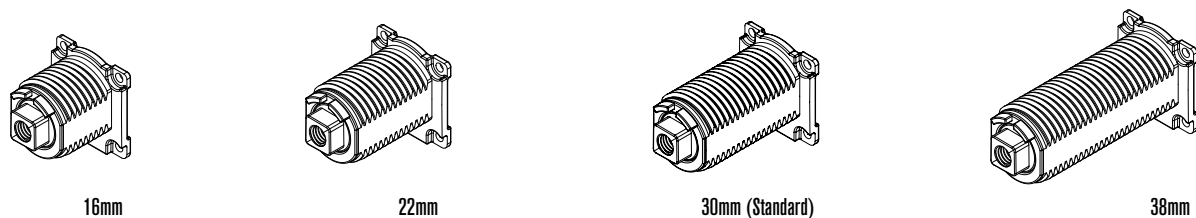
## Cam Options



## Cam-Stop Options



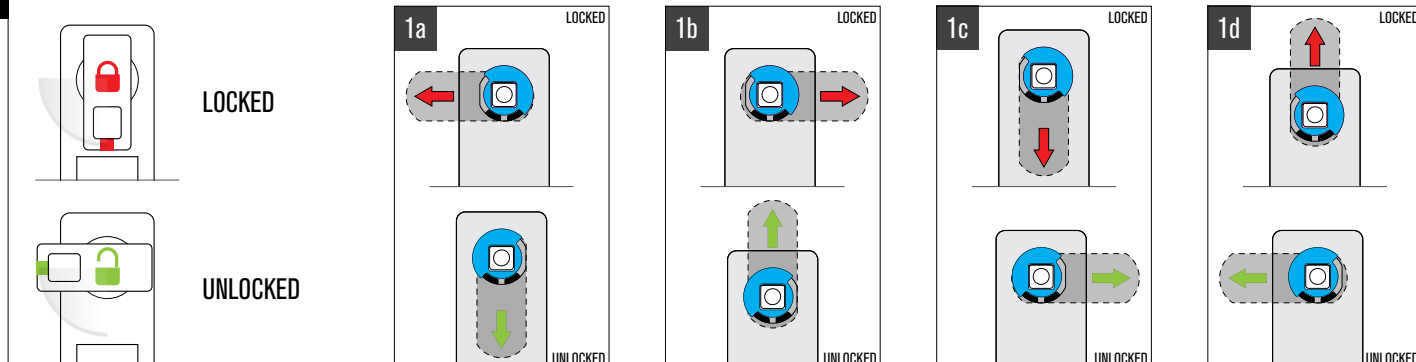
## Cylinder Length Options



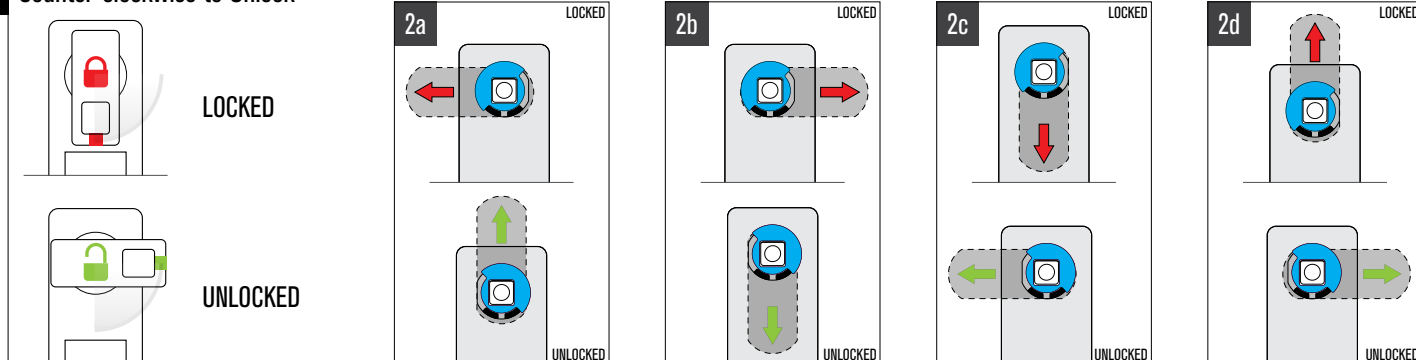


## 90° Knob Rotation

### 1 Clockwise to Unlock

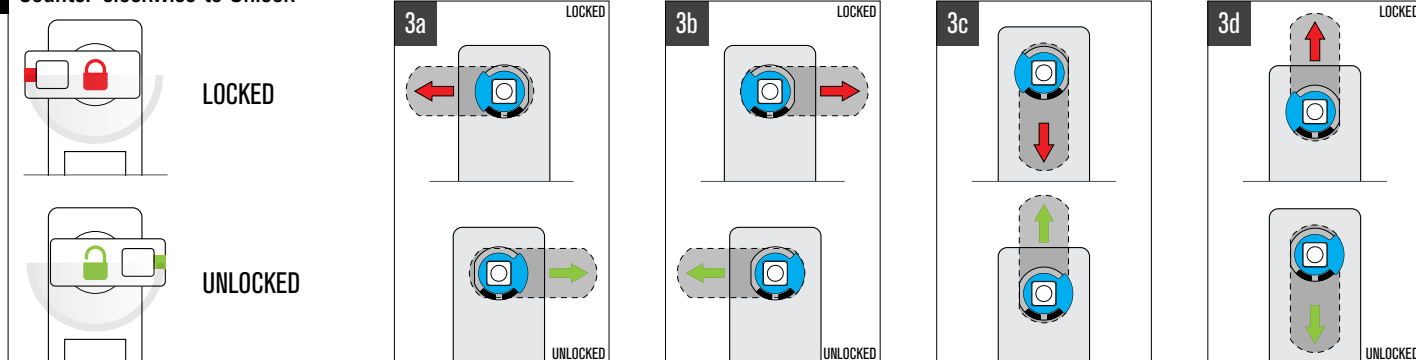


### 2 Counter-clockwise to Unlock



## 180° Knob Rotation

### 3 Counter-clockwise to Unlock



### 4 Clockwise to Unlock

